

# Schuylkill United Way

Serving Schuylkill County since 1936

Kelly K. Malone

Executive Director

[maloneexdir@schuylkillunitedway.org](mailto:maloneexdir@schuylkillunitedway.org)

Michelle Halabura

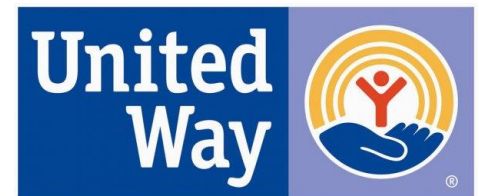
Director of Community Relations

[mhalabura@schuylkillunitedway.org](mailto:mhalabura@schuylkillunitedway.org)

Terri Conville

Administrative Director

[adminasst@schuylkillunitedway.org](mailto:adminasst@schuylkillunitedway.org)



Schuylkill United Way

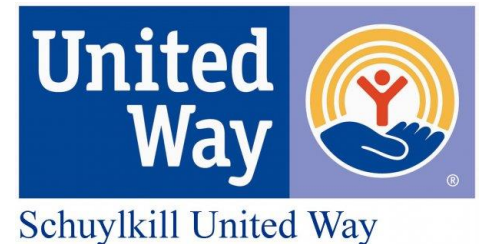
# Mission Statement

The Schuylkill United Way is dedicated to providing funding, guidance, and encouragement to the human service agencies that provide a wide variety of programs and services to residents of Schuylkill County.



# Vision Statement

To maintain a leadership role in bettering the lives of Schuylkill County residents.



# Agencies Served by the United Way

- American Red Cross, Tri County
- Avenues
- Big Brothers Big Sisters of Schuylkill Co.
- Boy Scouts of America, Hawk Mountain Council
- Child Development, Inc.
- Schuylkill County Society for Crippled Children
- SARCC- Sexual Assault Resource & Counseling Center of Schuylkill Co.
- Salvation Army, Tamaqua Corps
- Girl Scouts in the Heart of PA
- Salvation Army, Pottsville Corps
- Schuylkill Wellness Services
- Schuylkill Women in Crisis
- Schuylkill YMCA
- Tamaqua Area Meals on Wheels, Inc.
- Tamaqua YMCA

# History

- ➔ **Founded in 1936 as the Community Chest**
- ➔ **Even during hard times, community members raised as much as \$72,000 for the first campaign**
- ➔ **1976 the organization officially became the Schuylkill United Way- since then over \$30 million dollars have been raised for partner agencies in the community**

# Areas of Impact: Developing Children and Youth

One on One  
Youth Mentoring Program

**Big Brothers Big Sisters**



# Areas of Impact: Strengthening Families

Early Child  
Intervention Program

**Avenues**  
(Founded as UCP)



# Areas of Impact: Supporting Older Adults

Providing Nutritious  
Meals for Seniors

**Tamaqua Meals on Wheels**





# Areas of Impact: Disaster or Emergency Relief

Disaster Services

American Red Cross  
Tri County



# Areas of Impact: Health, Healing & Crisis Intervention

Domestic Violence  
Assistance

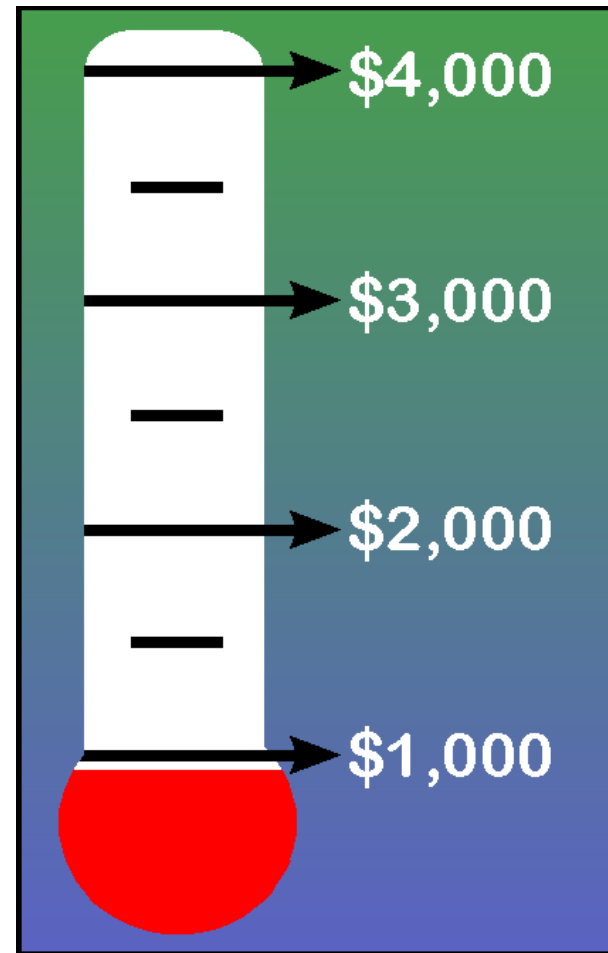
**Schuylkill Women in Crisis**



Lori Guzick organizing a memorial project in honor of her nephew, David John Guzick. The project with her niece, Samantha Cody. Photo courtesy of the Pottsville Republican.

# Annual Campaign

- ➔ All donations are raised from September through November
- ➔ Donations come from the generosity of businesses and individuals
- ➔ 99% of the money raised stays in Schuylkill County



# PA 2-1-1

- ➔ Free health and human service call line
- ➔ Anyone can utilize this call line
- ➔ There is no cost for a nonprofit to be listed in the database



# Schuylkill United Way Programming: Stuff the Bus

- A month long school supply drive held each July
- Donations are received from individuals and distributed to our agencies for needy children
- In 2015 more than 1200 backpacks stuffed with school supplies were collected



# Stuff the Bus Promotions

## **Stuff the Bus Kids Day**

- At Schuylkill Mall
- Fun activities for kids provided
- \$1 movie for the kids in the morning
- Free lunch provided
- Donations for Stuff the Bus accepted throughout July in the mall and during this special day

## **Reading Phillies**

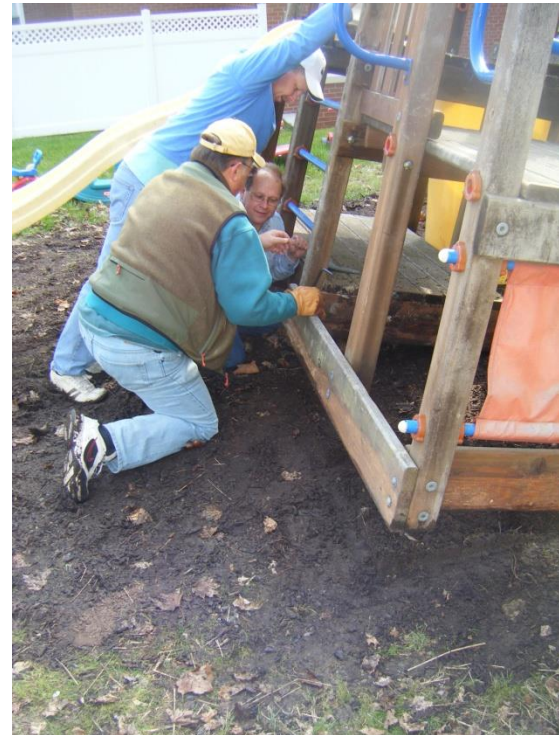
- Celebrate Coal Region Night
- Throw out first pitch

## **Schuylkill Idol Collaboration**

- Each agency has an opportunity to present info on their organization during the Tuesdays in July
- Donations for Stuff the Bus accepted throughout July in the mall and during the Idol programming

# Capt. Jason B. Jones Day of Caring

- This day of volunteering allows individuals to come together to lend a hand to benefit Schuylkill County nonprofit organizations and parks
- Over **\$3,000** dollars were saved in one hour, due to the volunteers working at various nonprofit and government locations throughout the county



# Schuylkill United Way

Serving Schuylkill County since 1936

Kelly K. Malone

Executive Director

[maloneexdir@schuylkillunitedway.org](mailto:maloneexdir@schuylkillunitedway.org)

Michelle Halabura

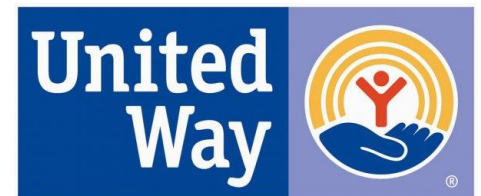
Director of Community Relations

[mhalabura@schuylkillunitedway.org](mailto:mhalabura@schuylkillunitedway.org)

Terri Conville

Administrative Director

[adminasst@schuylkillunitedway.org](mailto:adminasst@schuylkillunitedway.org)



Schuylkill United Way